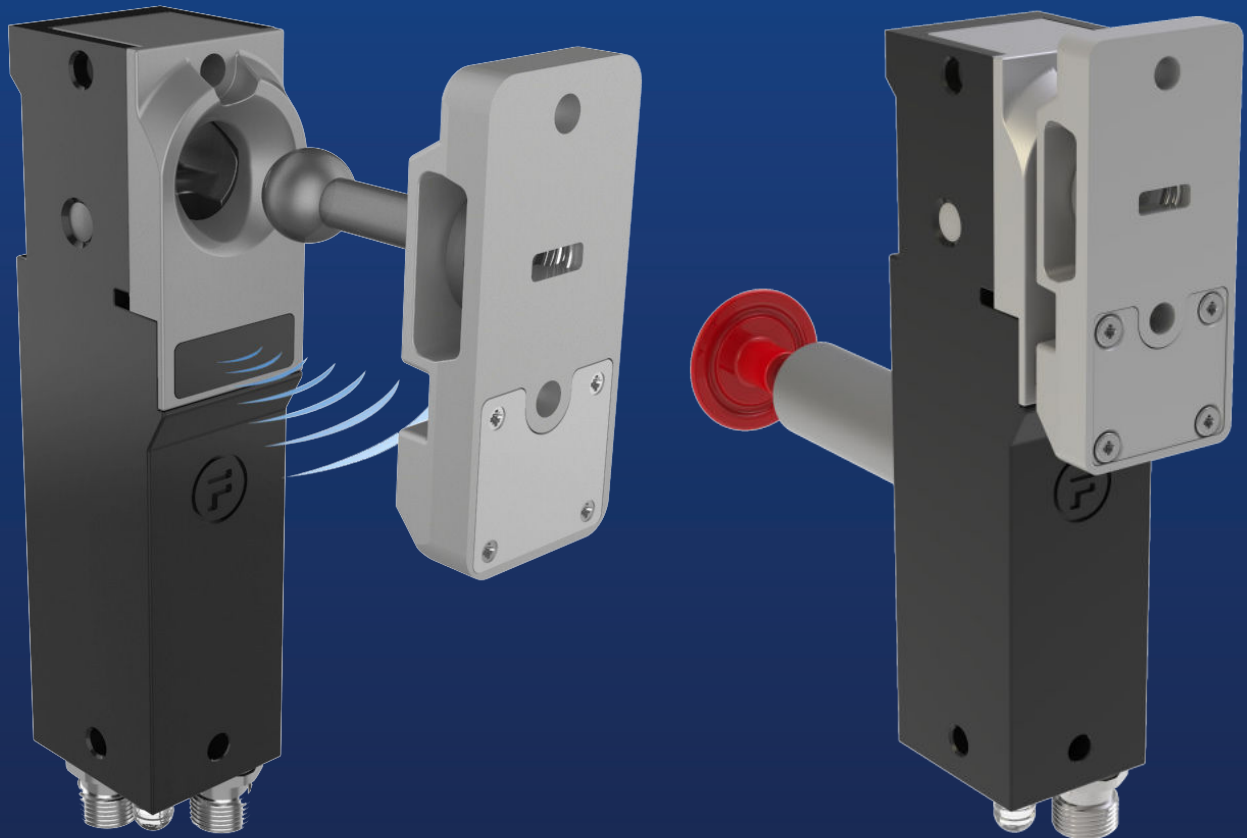


FORTRESS



**Compact Robust Interlock with
RFID Coding**

ATOM



C



US

What is ATOM?

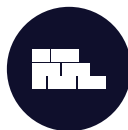
ATOM is a compact, solenoid controlled interlock with high coded RFID, which hosts over 4,000,000,000 unique codes to prevent defeat. Externally approved and suitable for applications up to PLe (Cat. 4) **ATOM** can be used in heavier industry applications.



Warehouse Applications



Automotive Applications



Construction Applications

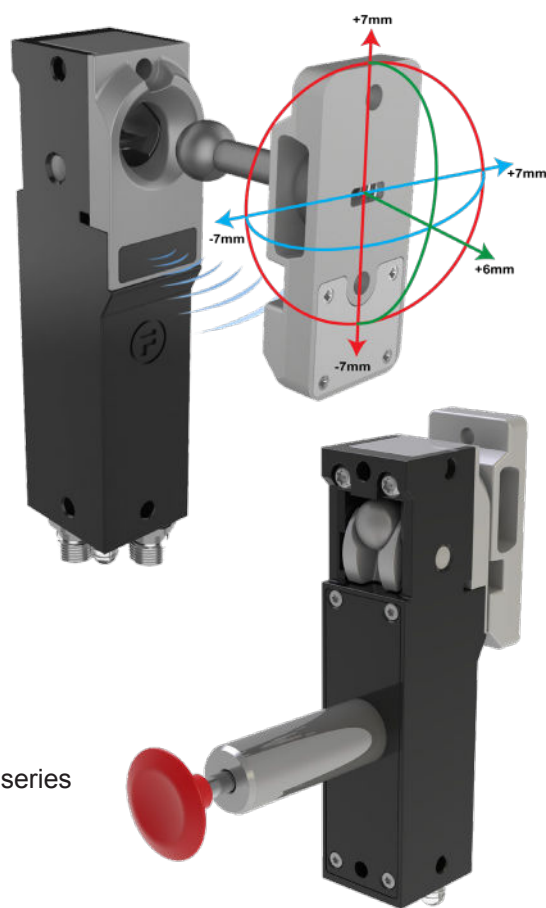
The self-centring actuator, with retention forces of 8,000N, allows for misalignment in moveable guards, both hinged & sliding. Manufactured in stainless steel the head has an open design to prevent dust, dirt & corrosion from impacting performance. A LED at the base provides clear machine state indication from all angles.

Multiple units can be connected together with OSSD (Output Signal Switching Device) functionality preventing fault masking & minimises cabling requirements.

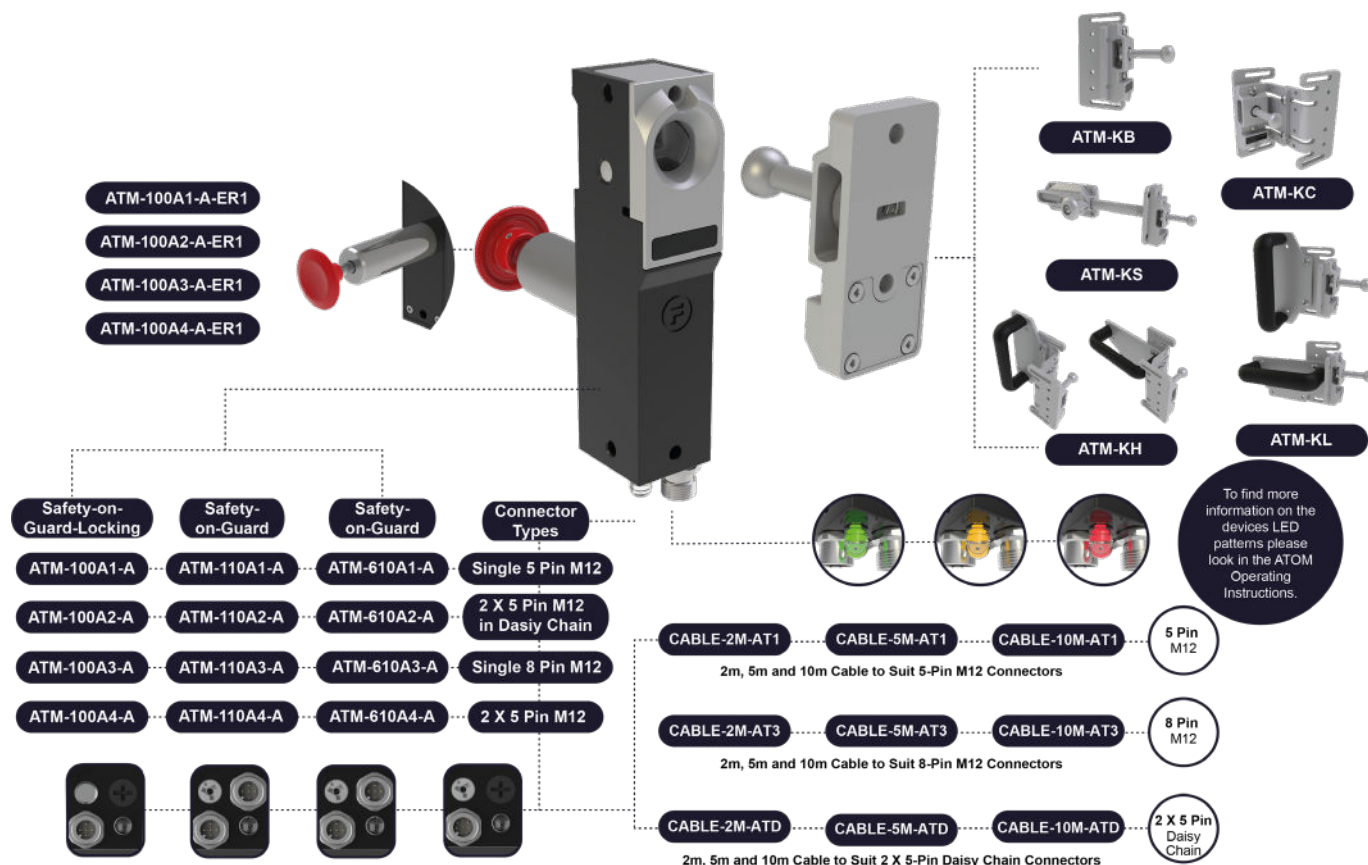
An Escape Release (ER) option is available for Safety-On-Guard-Locking (SOGL) variants, to allow egress from safeguarded spaces.

What are the features of ATOM?

- Ultra compact mounting footprint, easy to mount with 4 x M5 screws
- Suitable for applications up to SIL3 Cat.4 PLe
- Provides OSSD outputs with daisy-chain connection, connects up to 8 ATOMs in series
- Available in multiple hardware variants
- Sealed to IP65 and IP67 & IP69
- 24V control voltage
- Safety-On-Guard only with Power-to-Lock
- Safety-On-Guard-Locking with Power-to-Lock & Power-to-Unlock
- Padlockable head during guard opening to prevent unexpected restart
- Third party TUV approved



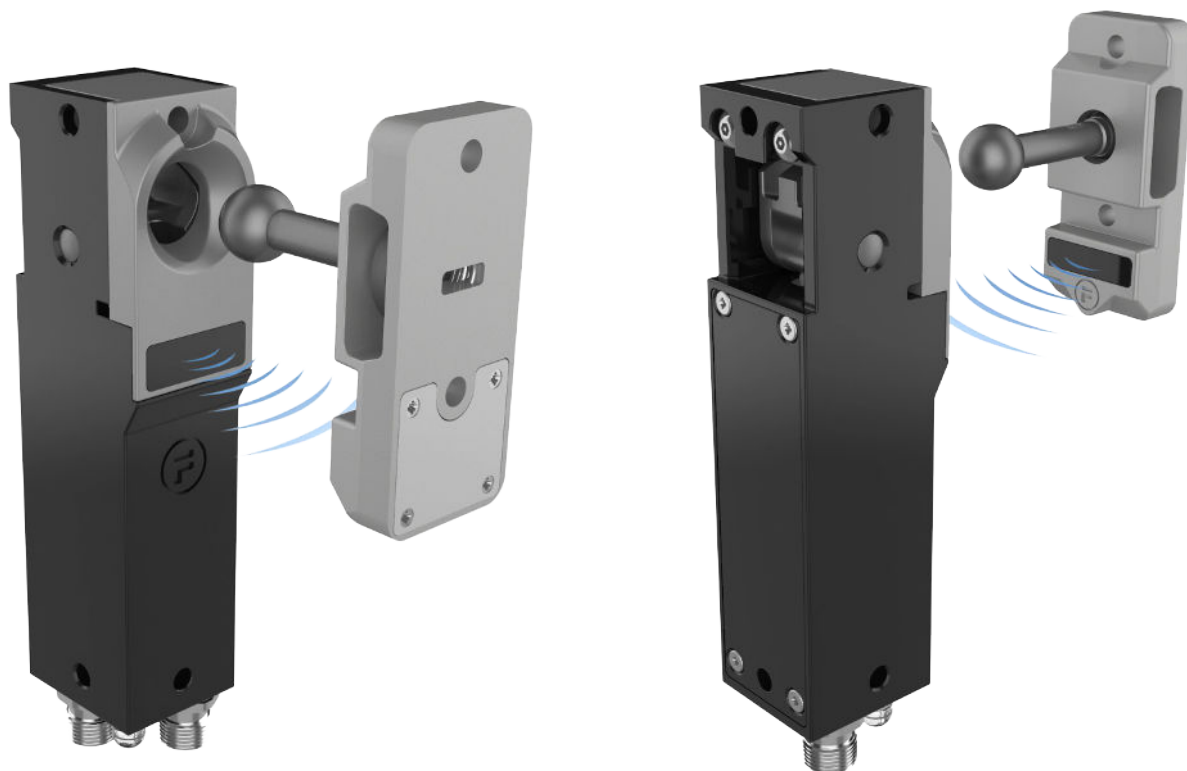
Product Range



High Coded RFID

ATOM has a high-coded RFID technology that provides millions of different coding combinations and is classed as "high" coding by ISO 14119.

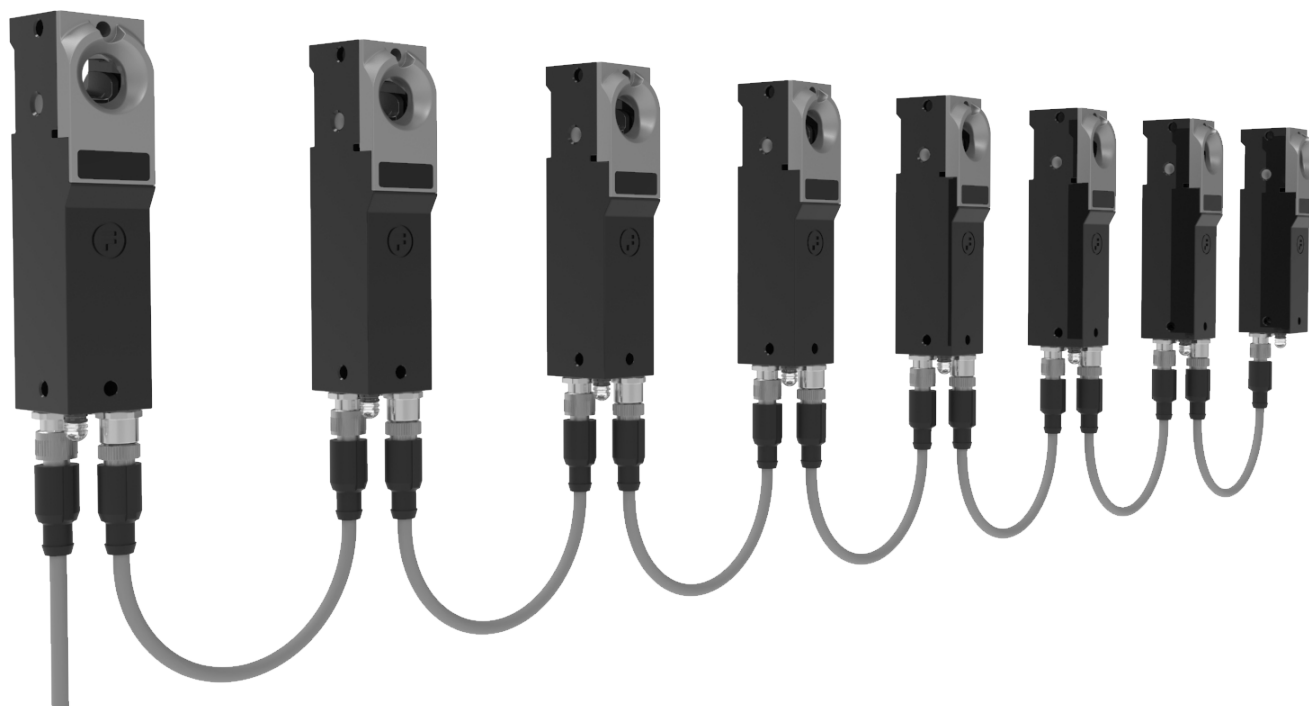
The uniquely coded actuator helps to create a tamper-proof system that prevents unauthorised access.



OSSD Outputs

ATOM supports OSSD output (**O**utput **S**ignal **S**witching **D**evice) with daisy-chain connection that enables ease of wiring installation and prevents fault masking powered from the same supply.

Each **ATOM** unit in series draws current and causes a voltage drop on the power line. For a detailed calculation please see the voltage drop tool on the Fortress website.

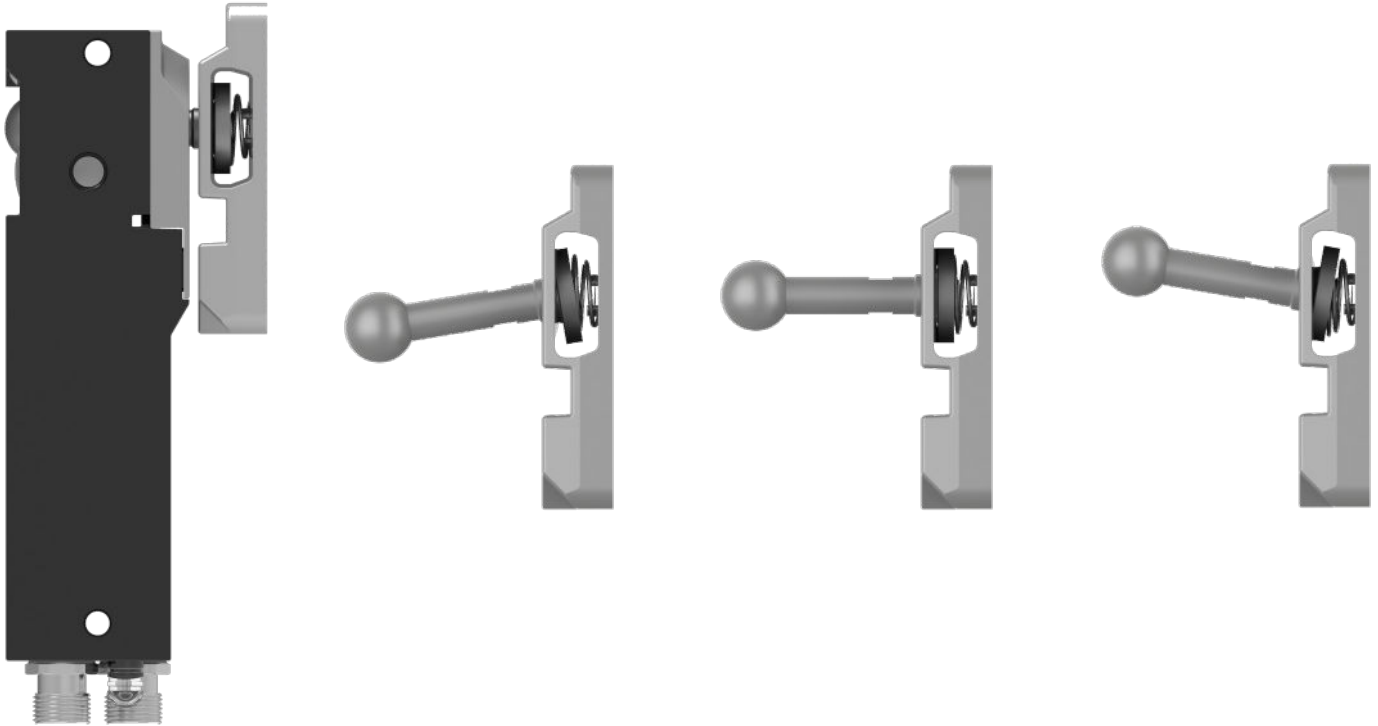


High Mechanical Misalignment

The **ATOM** actuator can pivot and self-centre to operate under a high degree of misalignment.

High maximum retention force of up to 8kN.

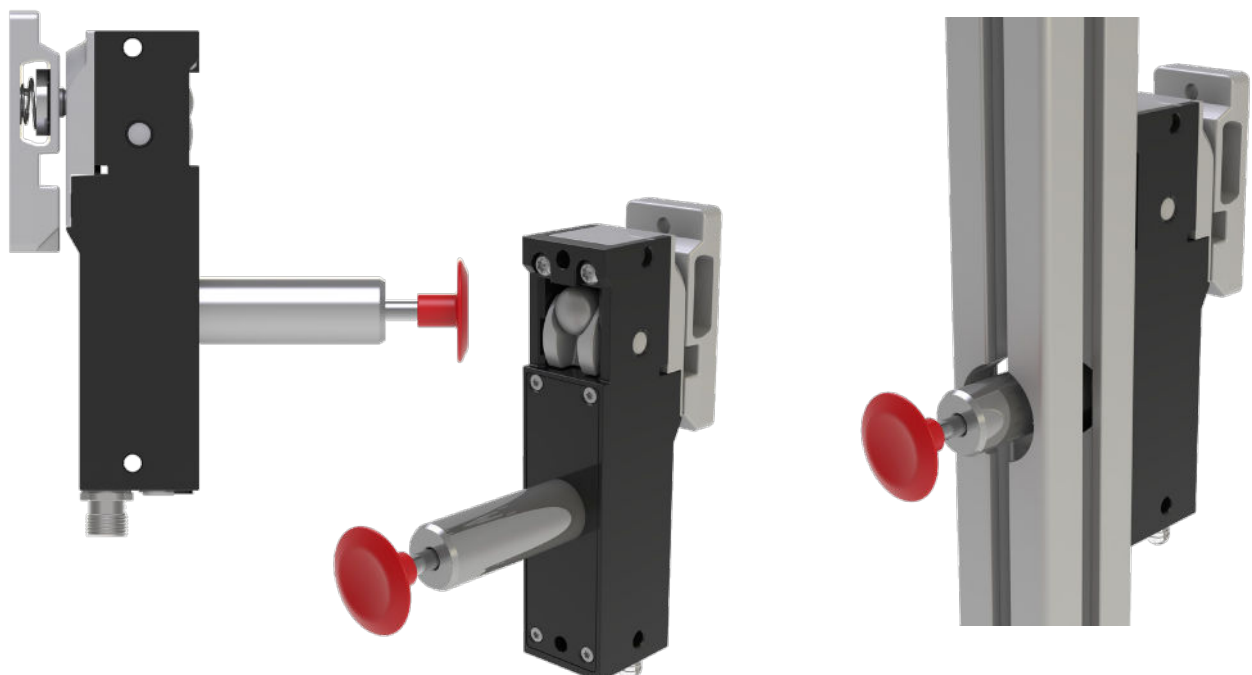
Pivoting mechanism is particularly well suited to small radius hinged doors and hatches.



Escape Release

ATOM with Escape Release allows a person to escape if they become trapped inside a safeguarded space.

Escape Release functionality for whole body access application perfect for small guards and tight spaces.



ATOM in Action

If a person requires entry to the machine they must press the 'request to stop' button.

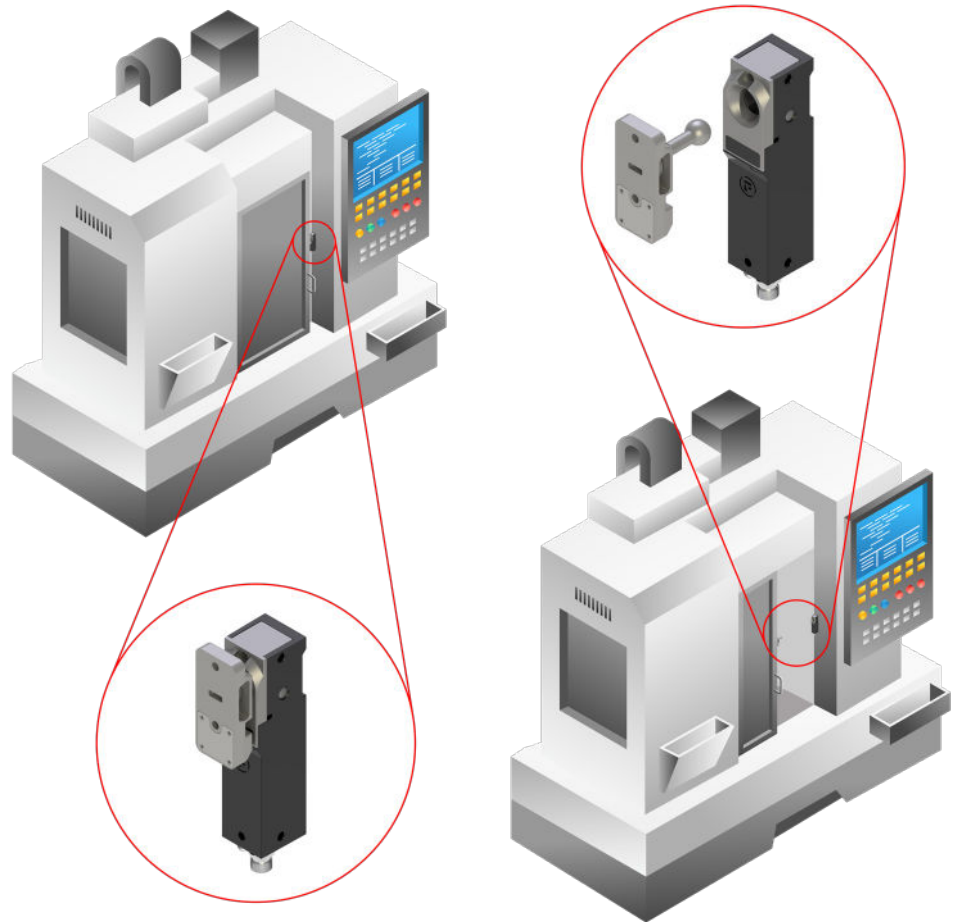
The **ATOM** will prevent guard doors from opening whilst the machine is still operating during rundown time.

Once the machine has stopped, the **ATOM's** solenoid is energised which breaks the dual safety circuit to prevent unexpected restart.

Opening the guard door disconnects the RFID connection which prevents inadvertent restart.

High-coded RFID technology prevents any attempts to manually defeat the unit.

When intervention is complete, closing the machine door will re-establish the safety circuits and providing the solenoid is de-energised, the **ATOM** unit will then relock and allow for machine restart.



ATOM Escape Release in Action

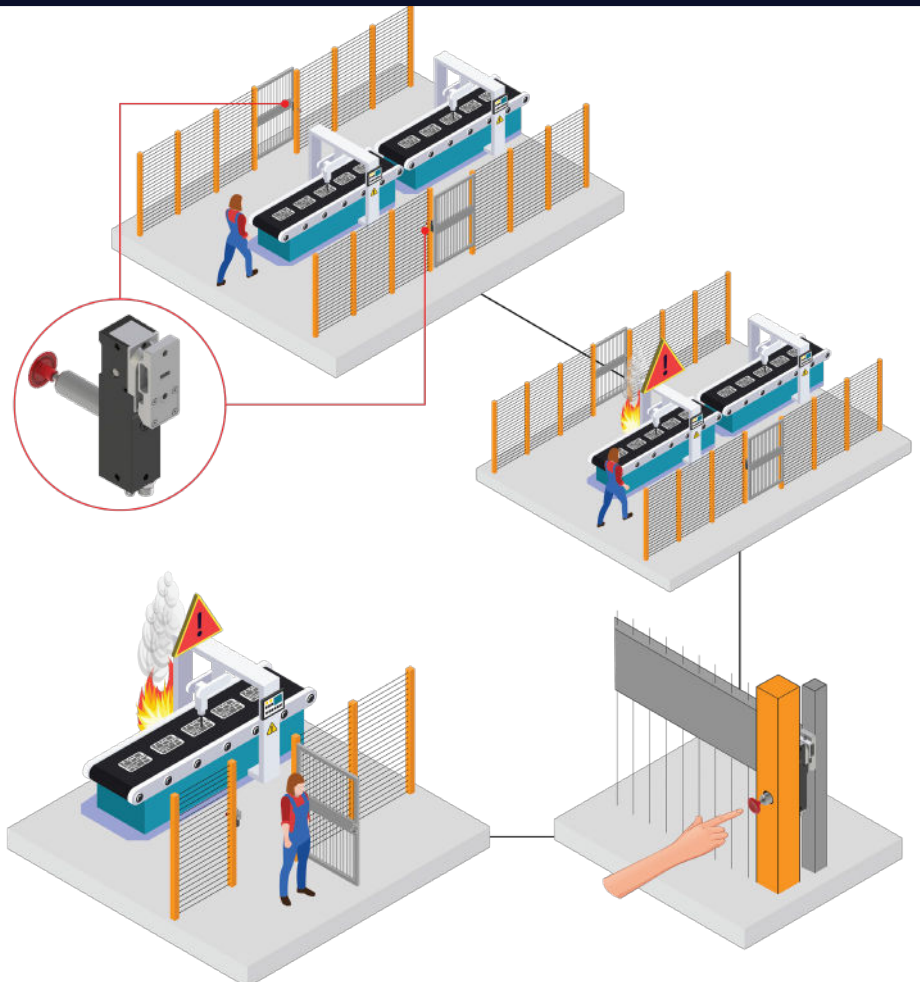
With added benefit of escape release our **ATOM ER** units allow for egress of a safeguarded space.

In this application the **ATOM ER** units are located on each guard opening.

While personnel are working within the safeguarded area an expected hazard occurs, blocking the entrance/exit route.

Personnel can press the escape release, which will override the locking mechanism by disconnecting the RFID connection.

The personnel can now egress the hazardous space.



FORTRESS

FORTRESS

“

We have the peace of mind that our workers are safe and protected by Fortress equipment.”

”



FORTRESS

“

Fortress' best quality is providing each customer the most robust and safe solution - all while being completely customizable and retaining a high level of quality.”

”



FORTRESS

“

Fortress is best at providing customised solutions at a rapid turnaround - reacting immensely to a challenge to put the customer's needs first.”

”



FORTRESS

“

We value suppliers that can help navigate the standards and provide guidance that is directly linked to our applications.”

”



Fortress Global Offices and Manufacturing Facilities

www.fortress-safety.com

Fortress Interlocks Ltd

+44 (0)1902 349000

Fortress Interlocks China

+86 (021) 6167 9002

Fortress Interlocks USA

+1 (859) 578 2390

Fortress Interlocks India

+91 7042358818

Fortress Interlocks Pty Ltd

+61 (0)3 9771 5350

Contact us



Notes

