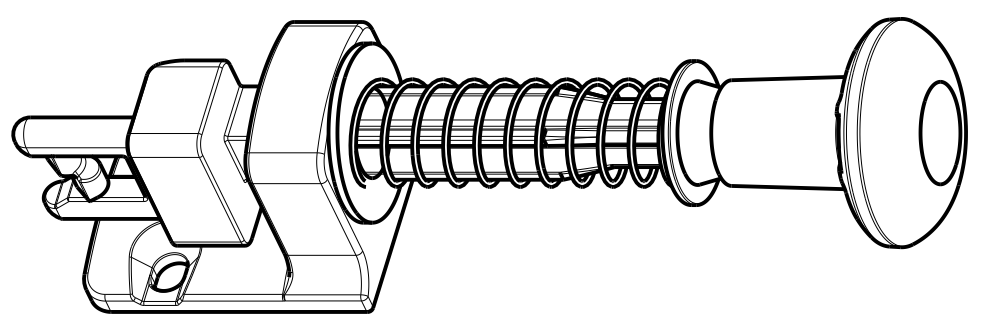
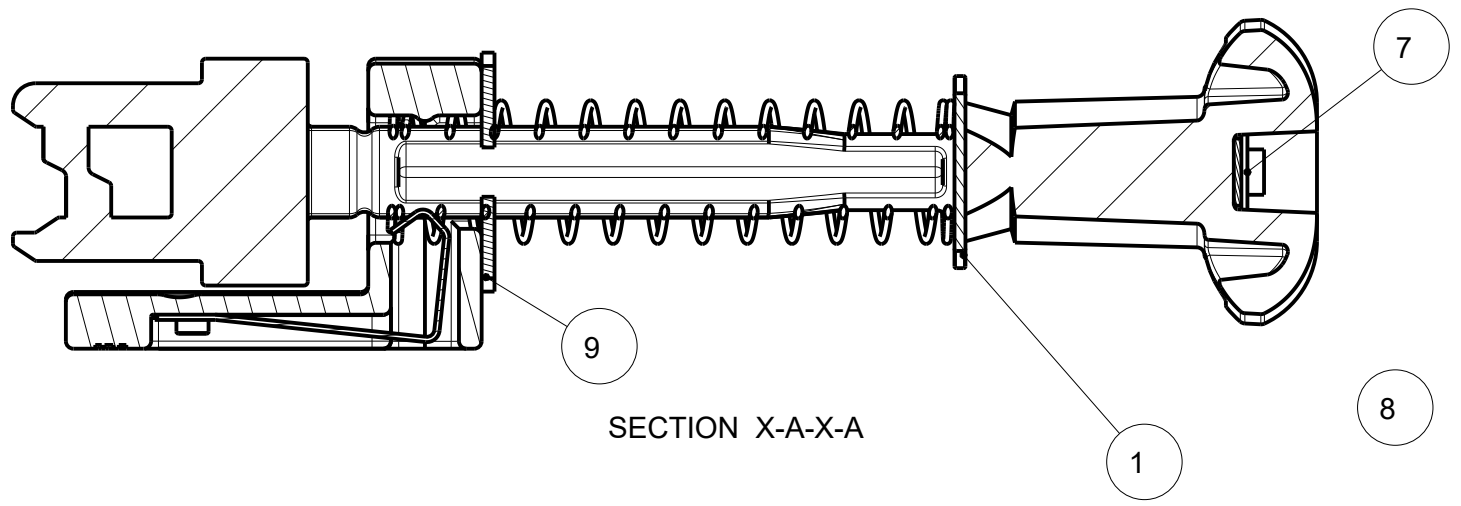
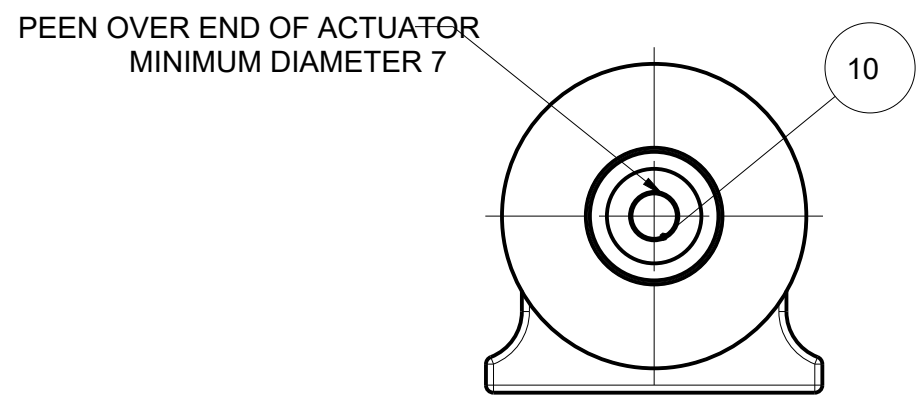
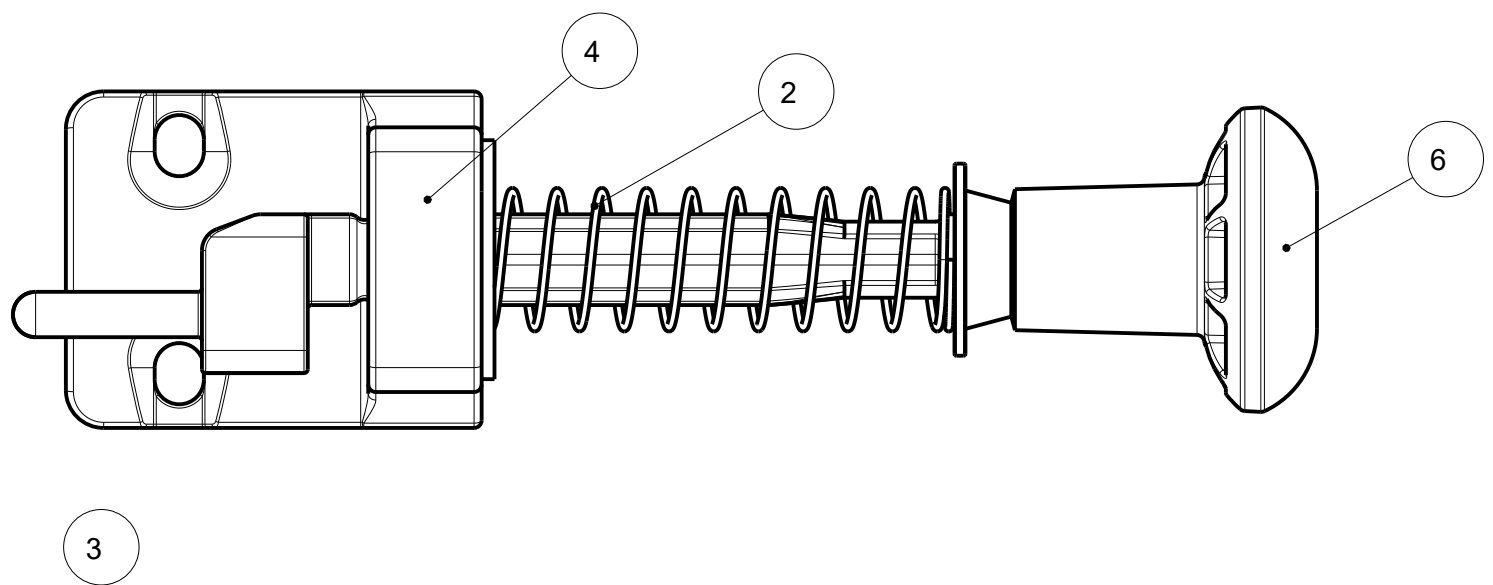
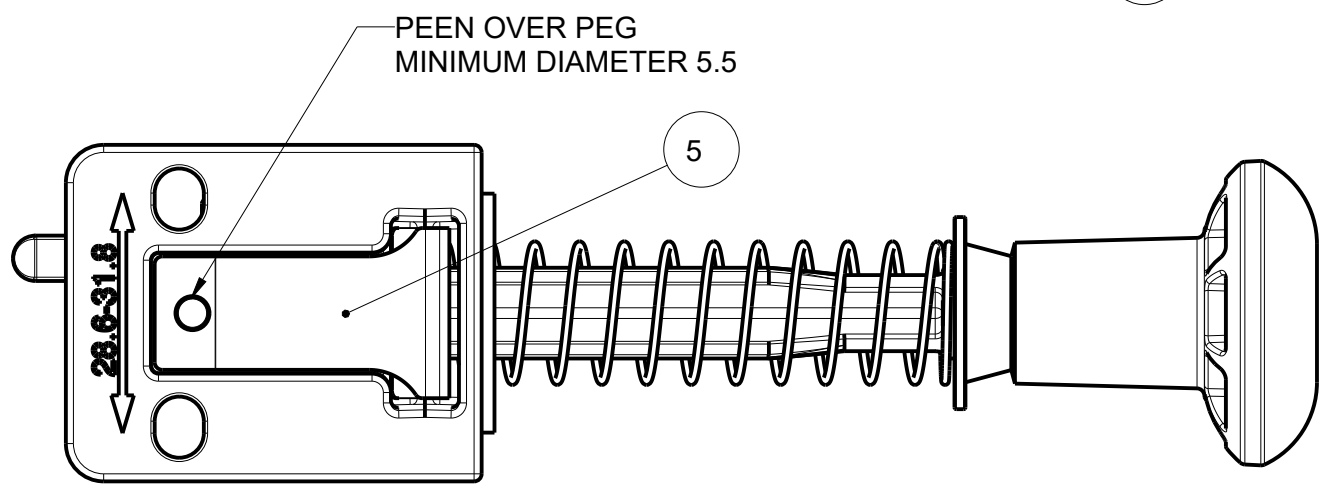


ITEM	DESCRIPTION	PART NO.	QTY
10	LOKTITE THREADLOCK RETAINER	CG0007	---
9	STAINLESS STEEL WASHER 5/8 INCH (DM-A)	Z68119	1
8	M8 LIGHT WASHER	Z68012	1
7	M6 LIGHT WASHER	Z68066	1
6	KNOB FOR CAST SLIDE BAR	F50278	1
5	DM LEAF SPRING	F65119	1
4	DM HAND-OPERATED ACTUATOR BRACKET	F46325	1
3	DM HAND-OPERATED ACTUATOR	F46323	1
2	COMPRESSION SPRING FOR DM-A	F65126	1
1	1/2" T3 LIGHT A2 S/S FLAT WASHER	Z68008	1

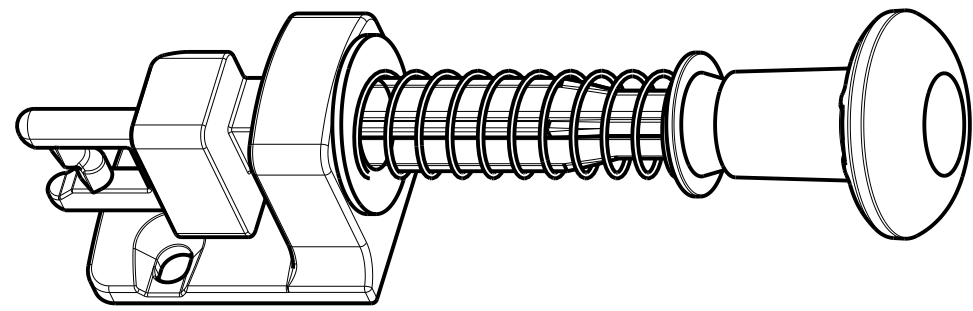


SCALE 0.750

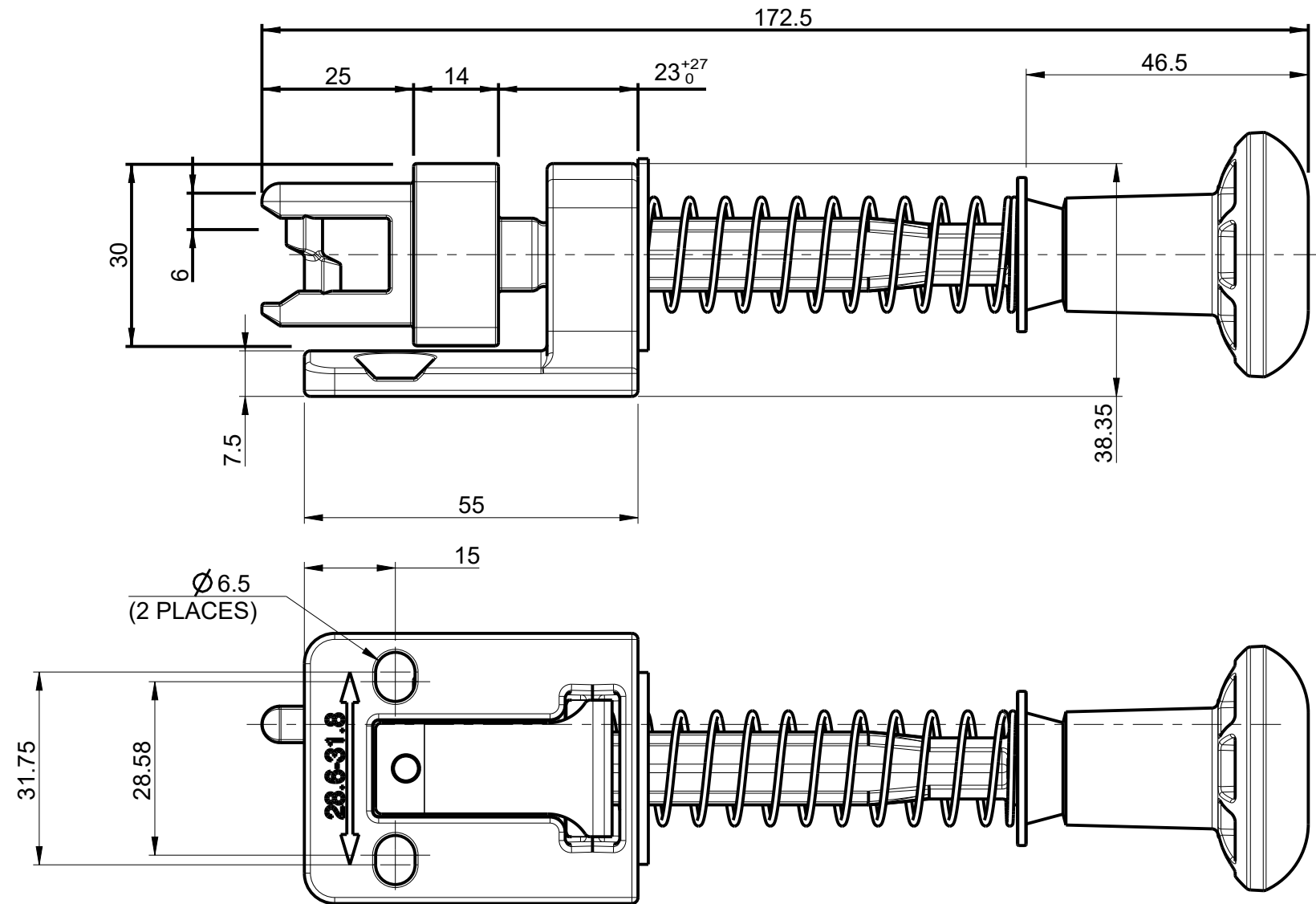
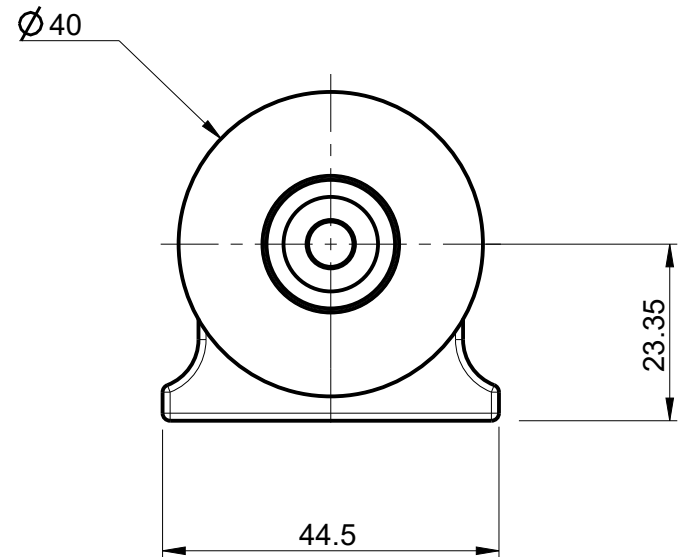
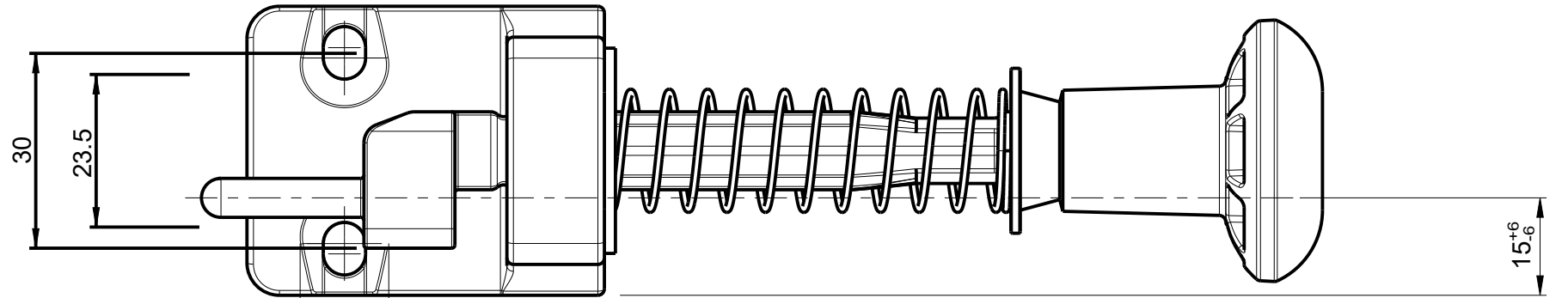


NOTE: ITEM 10 TO BE APPLIED PRIOR TO RIVETING KNOB IN PLACE RIVETING TO BE COMPLETED BEFORE THE LOCTITE CURES.

THE COPYRIGHT OF THIS DRAWING BELONGS TO FORTRESS INTERLOCKS. THE CONTENT OF THIS DRAWING IS CONFIDENTIAL AND MUST NOT BE DISCLOSED TO ANY 3rd PARTY WITHOUT OUR SPECIFIC, WRITTEN APPROVAL.		<b>TITLE:</b> DM-A HAND OPERATED ACTUATOR WITH SPRING RETURN		<b>ISSUE:</b> 0-D
148-150 BIRMINGHAM NEW ROAD, WV4 6NT <b>Fortress Interlocks</b> TEL: +44 (0) 1902 499600 FAX: +44 (0) 1902 499610 www.fortressinterlocks.com		DO NOT SCALE. IF IN DOUBT ASK! ALL DIMENSIONS ARE IN mm (UOS) REMOVE ALL SHARP EDGES, BURRS AND FLASH ORIGINAL SIZE <b>A3</b>		RELEASE LEVEL: Approved For Production
<b>Fortress Interlocks</b>		<b>DWG NO:</b> DM-A	<b>PART NO:</b> DM-A	<b>DATE:</b> 22-02-07
<b>Interlocks</b>		<b>SHEET 1 OF 2</b>	<b>SCALE:</b> 1.00	<b>DRAWN BY:</b> Andy Horseman
<b>www.fortressinterlocks.com</b>		<b>MATERIAL:</b> NOT APPLICABLE	<b>FINISH:</b> SELF	<b>CHECKED BY:</b> Ron Sheldon
<b>www.fortressinterlocks.com</b>		<b>GENERAL TOLERANCE:</b> ±0.1 / ±0.5°	<b>VOLUME:</b> 57417.509 MM^3	<b>VOLUME:</b> 57417.509 MM^3



SCALE 0.750



THIS SHEET IS THE SALES DRAWING  
SEE SHEET 1 FOR THE ASSEMBLY DRAWING.

THE COPYRIGHT OF THIS DRAWING BELONGS TO FORTRESS INTERLOCKS. THE CONTENT OF THIS DRAWING IS CONFIDENTIAL AND MUST NOT BE DISCLOSED TO ANY 3rd PARTY WITHOUT OUR SPECIFIC, WRITTEN APPROVAL.		<b>TITLE:</b> DM-A HAND OPERATED ACTUATOR WITH SPRING RETURN		<b>ISSUE:</b> 0-D <b>RELEASE LEVEL:</b> Approved For Production	
148-150 BIRMINGHAM NEW ROAD <b>Fortress Interlocks</b> WV4 6NT TEL: +44 (0) 1902 499600 FAX: +44 (0) 1902 499610 www.fortressinterlocks.com		DO NOT SCALE. IF IN DOUBT ASK! ALL DIMENSIONS ARE IN mm (UOS) REMOVE ALL SHARP EDGES, BURRS AND FLASH ORIGINAL SIZE <b>A3</b>		<b>DWG NO:</b> DM-A <b>SHEET 2 OF 2</b> <b>MATERIAL:</b> NOT APPLICABLE <b>FINISH:</b> SELF	<b>PART NO:</b> DM-A <b>SCALE:</b> 1.00 <b>GENERAL TOLERANCE:</b> ±0.1 / ±0.5° <b>VOLUME:</b> 57417.509 MM^3
				<b>DATE:</b> 22-02-07 <b>DRAWN BY:</b> Andy Horseman <b>CHECKED BY:</b> Ron Sheldon	