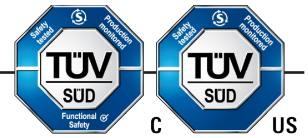


## Operating Instructions: S40 Foot

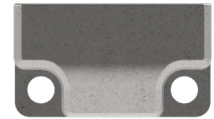
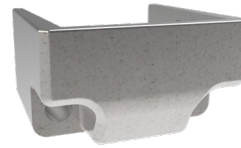


Electrical Switching / Locking

### Description

To terminate non-switch configurations:

- Secures unit firmly to mounting surface.
- Removable to allow for modification.
- For use in trapped key solutions.
- Seals from dust ingress.



### Options & Ordering Information

#### Description

Foot

#### Part No.

S40FT0

\* Item No. or Part No. can be used for quotation and ordering purposes.

### amGardS40 Foot Technical Specification

Materials	Stainless Steel to BS3146
Colour	Stainless Steel
Ambient Temperature	-20°C to 80°C (-4°F to 176°F)*
Environment	Indoor & Outdoor

\*The units will only continue to work below freezing point (0°C) where it can be guaranteed that ice will not form on or in the unit; as it will cause the mechanical parts to bind and jam.

### amGardS40 Foot Safety Functions

Safety Function 1	Part No.
Retains lower end of product	S40FT

### Figure 1: Dimensional Drawing -

