

EXPXL416 & EXPXL461

ALFRED EX RATED SOLENOID MODULE WIRING DIAGRAM

FOR SAFETY-ON-GUARD MODULES WITH SAFETY MONITORING ON GATE/KEY ACTION ONLY.

DIAGRAM A - WIRING DIAGRAM;

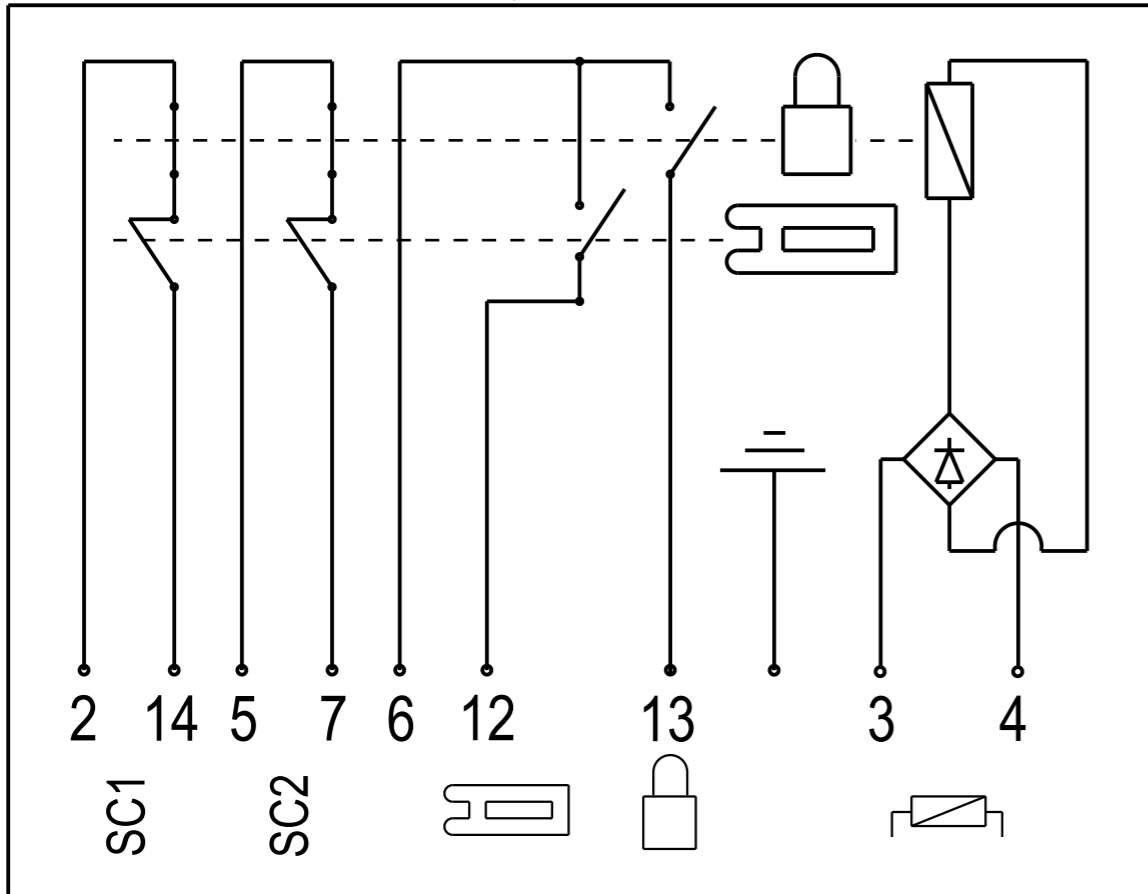
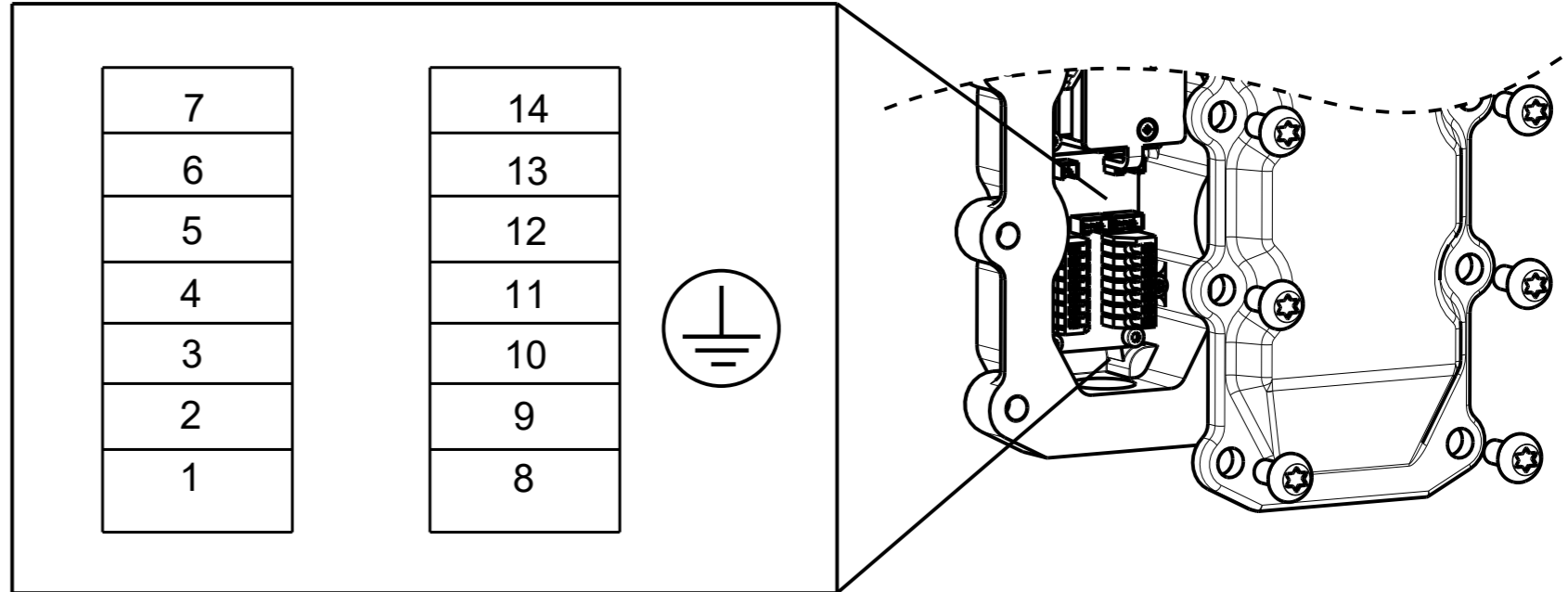
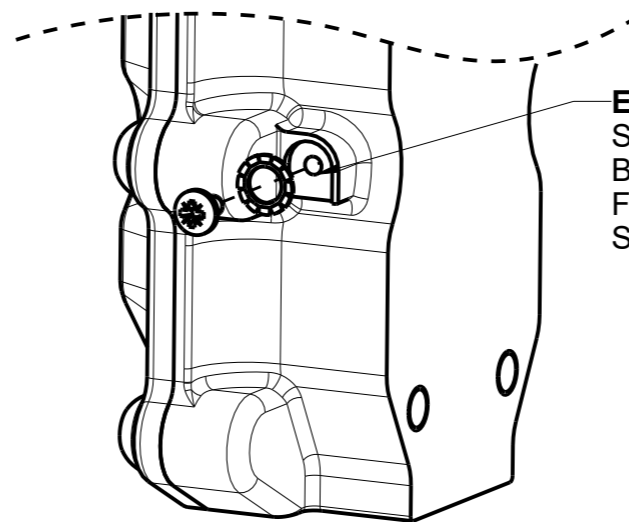


DIAGRAM B - TERMINAL POSITIONS;



INTERNAL EARTHING POINT
SHALL BE USED FOR EQUIPMENT GROUNDING CONNECTION.
FIX WITH M4 FIXING SCREW (SUPPLIED).
SEE OPERATING INSTRUCTIONS FOR DETAILS.



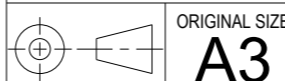
EXTERNAL EARTHING POINT
SHALL BE USED FOR SUPPLEMENTARY BONDING CONNECTION WHERE REQUIRED.
FIX WITH M4 FIXING SCREW (SUPPLIED).
SEE OPERATING INSTRUCTIONS FOR DETAILS.

CONTROL VOLTAGE	24V DC
SOLENOID VOLTAGE	24V DC
SOLENOID POWER RATING	350mA max @ 24V DC
MAXIMUM SWITCH CURRENT	DC13: Le=0.5a, Ue=24V DC
MINIMUM SWITCH CURRENT	1mA @5V DC
CABLE SIZE	26 - 14 AWG

THE COPYRIGHT OF THIS DRAWING BELONGS TO FORTRESS INTERLOCKS Ltd.
THE CONTENT OF THIS DRAWING IS CONFIDENTIAL AND MUST NOT BE
DISCLOSED TO ANY 3rd PARTY WITHOUT OUR SPECIFIC, WRITTEN APPROVAL.



DO NOT SCALE. IF IN DOUBT ASK!
ALL DIMENSIONS ARE IN mm (UOS)
REMOVE ALL SHARP EDGES,
BURRS AND FLASH



TITLE:
EXPXL416 & EXPXL461 - ALFRED WIRING DIAGRAM

DWG NO: T04573

PART NO: T04573

MATERIAL: UNSPECIFIED

FINISH: UNSPECIFIED

SCALE: 0.50

ISSUE: 0

RELEASE LEVEL: Approved For Production

DATE: 05-03-21

DRAWN BY: Stuart Lumsden

CHECKED BY: Liam O'Sullivan

SHEET: 1 OF 1

GENERAL TOLERANCE: $\pm 0.1 / \pm 0.5^\circ$