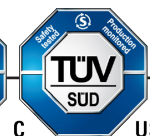
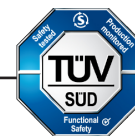
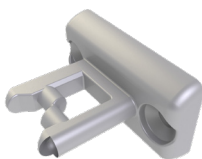
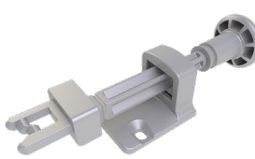

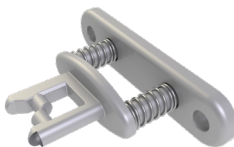



Operating Instructions: mGard Actuators



Actuators

Description	DM-F	DM-H	DM-A
<p>All actuators are for use with all DM type locks.</p> <p>DM-F - Fixed Actuator</p> <ul style="list-style-type: none"> • Suitable for most aligned guarding doors • Compact (fit for small radius guards) • Version with a chain is available using the part number DM-F-CHAIN. <p>DM-H - Hand Operated Actuator</p> <p>DM-A - Spring Released Hand Operated Actuator</p> <ul style="list-style-type: none"> • Suitable for use where secondary action to open / close is required • Highest misalignment DM Actuator • Vertical adjustment: +/- 6mm • Actuator can be rotated in bracket to suit DM Head Handling • Spring detent holds actuator in retracted position. <p>DM-C - Compressible Actuator</p> <ul style="list-style-type: none"> • Able to absorb vibration on hatches / doors • Ideal for doors fitted with seals • Can be used on small radius hinged doors • Reduces impact on DM if door closes with high forces. <p>DM-S - Self Aligning Actuator</p> <ul style="list-style-type: none"> • Designed for applications where guards are expected to move overtime during use. • Horizontal misalignment : +/- 7.50mm • Vertical misalignment: +/- 3.75mm • Rotational misalignment of 360°. 			
			

Technical Specifications

Retention Force (in combination with DM or DMSK front, top, side and rear entry)	2500N
Temperature	Mechanical components to 80°C

Tools and Fixings Required

- DM-F
- M5x25 CSK
 - Suitable driver for the above.
- If using through holes for any of the above
- 1 x Drill Ø5.5
 - 2 x M5 nuts per module
- If using threaded holes for any of the above:
- 1 x Drill Ø4.2
 - 1 x M5 Tap
- DM-H / DM-A
- M6x25
 - Suitable driver for the above
- DM-C / DM-S
- M6x25
 - Suitable driver for the above
- If using through holes for any of the above
- 1 x Drill Ø6.6
 - 2 x M5 nuts per module
- If using threaded holes for any of the above:
- 1 x Drill Ø5
 - 1 x M6 Tap

Operating Instructions: Actuators

Mounting

Mount this unit well away from sources of vibration or use anti-vibration mountings in order to avoid the effects of vibration, shock and bump.

Mount the unit only in its correctly assembled condition to flat steel plate of minimum thickness 3.0mm or 6.0mm if aluminum. The product must be mounted in such a way as to ensure that the gap around the perimeter of the guard, when closed, confirms to relevant machinery safety standards.

- Actuators listed within this document are for use with Door Modules only.
1. Locate the actuator such that tongue portion of the product aligns with the head portion of the door module.
 2. Mount the actuator using the chosen fixing.
 3. Tighten the actuator using a Torque of 8 to 10Nm (5.9 to 7.4 lb. Ft)

Mechanical Function Test

Close the guard to ensure the actuator correctly aligns with the head portion of the door module it is mating with. Minimise wear to the tongue portion of the actuator with centralised alignment to the head portion. Operation of the actuator will depend on the sequence of the device this actuator is mating with. To test this actuator, see functional test for the door module.

Figure 1: Dimensional Drawing - DM-F

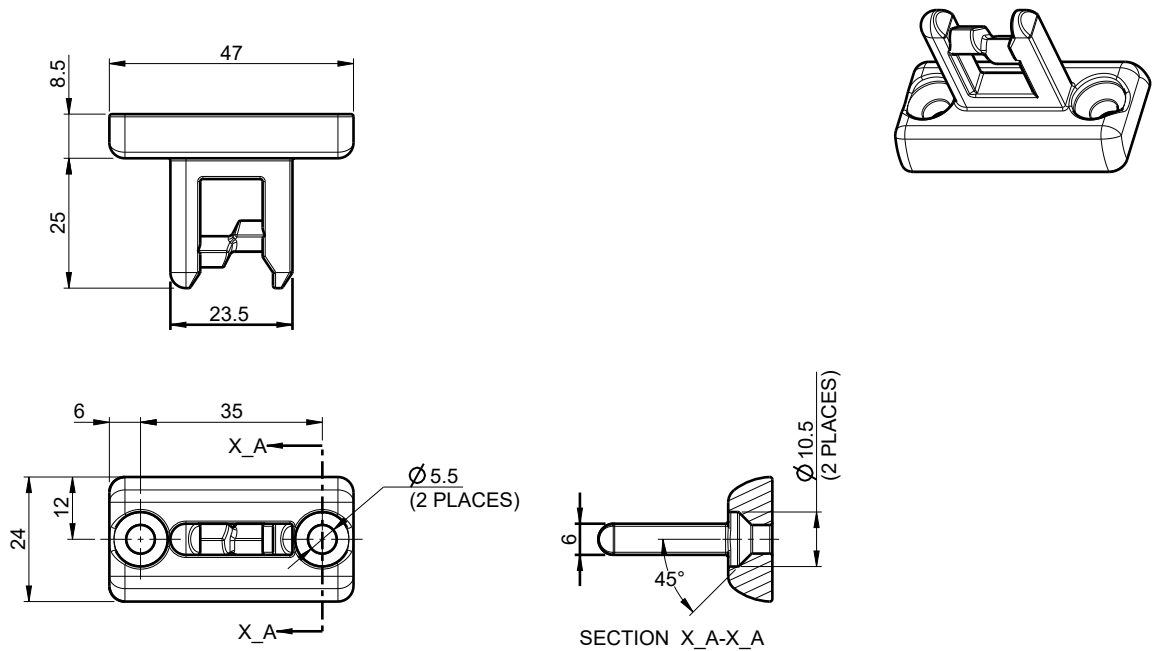


Figure 2: Dimensional Drawing - DM-H

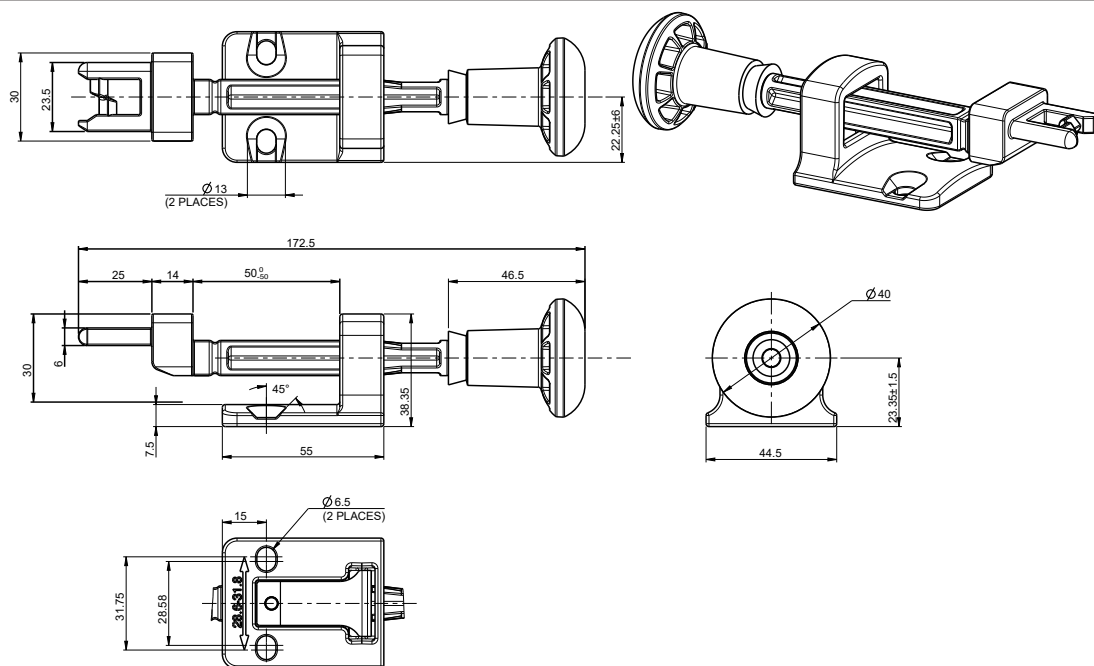


Figure 3: Dimensional Drawing - DM-A

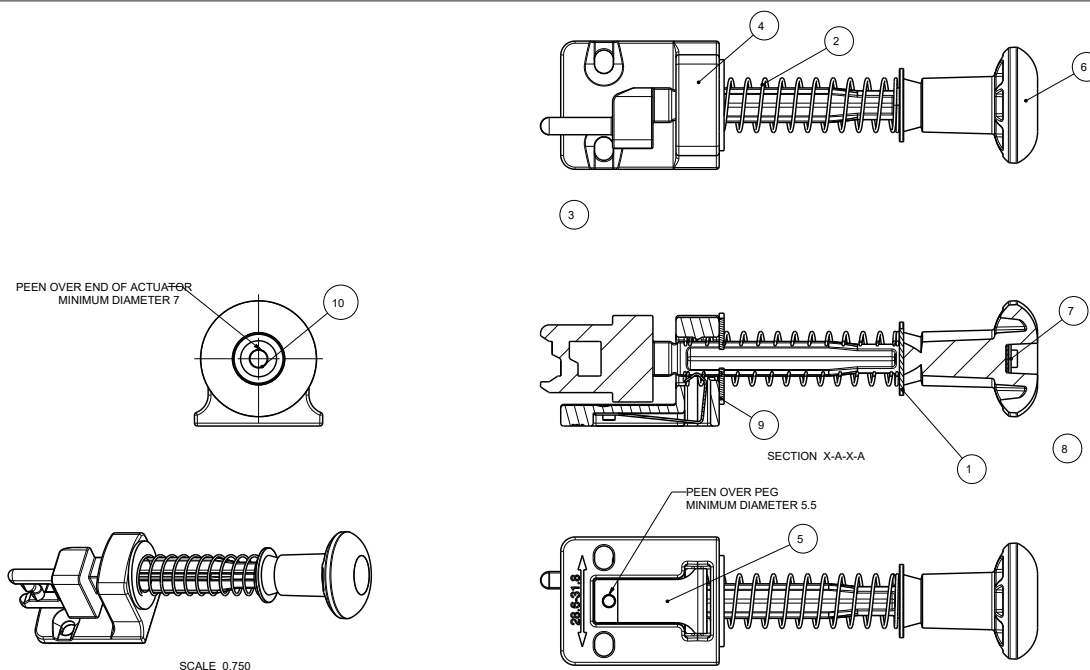


Figure 4: Dimensional Drawing - DM-C

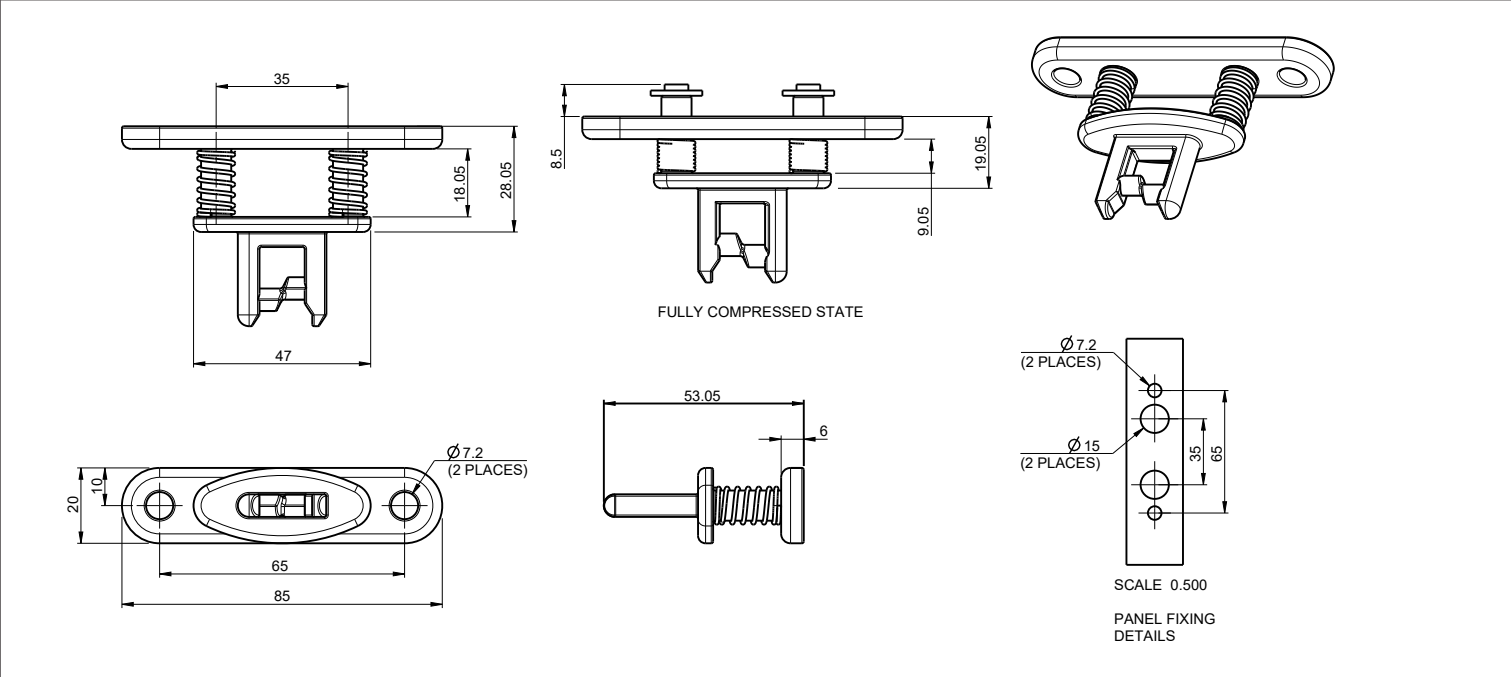


Figure 5: Dimensional Drawing - DM-S

