

I/O Blocks

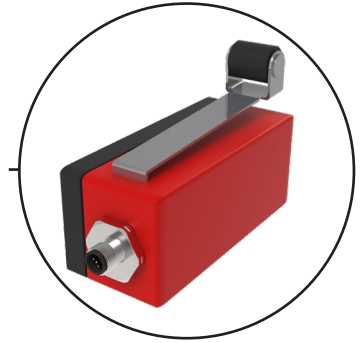
Fortress *proNet* devices allow you to connect devices and sensors close to point of use and transmit the signals to the controller via industrial ethernet, giving reduced installation cost and time as well as more machine up time, with improved diagnostics compared to a hardwired approach. Fortress' modular approach allows you to select the connections required for your application, whether it be power, standard or safety I/O.

Fortress I/O Block Example System with 4 Standard I/O, 3 Safety Inputs and 1 Safety Output

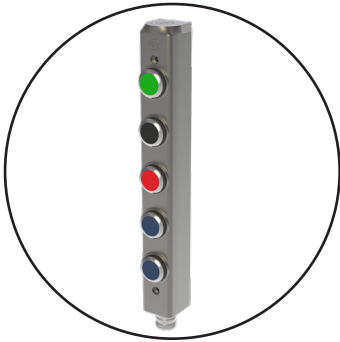
Standard I/O: Presence Sensor



Standard I/O: Limit Switch



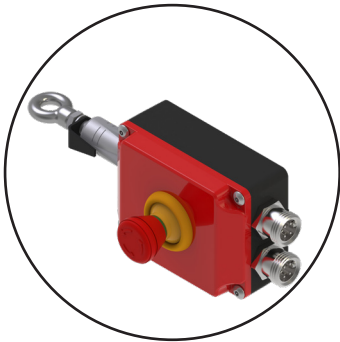
Standard I/O: Control Stack / Pendant



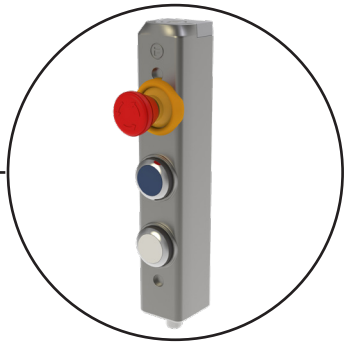
Standard I/O: Light Stack



Safety Input: Rope Pull



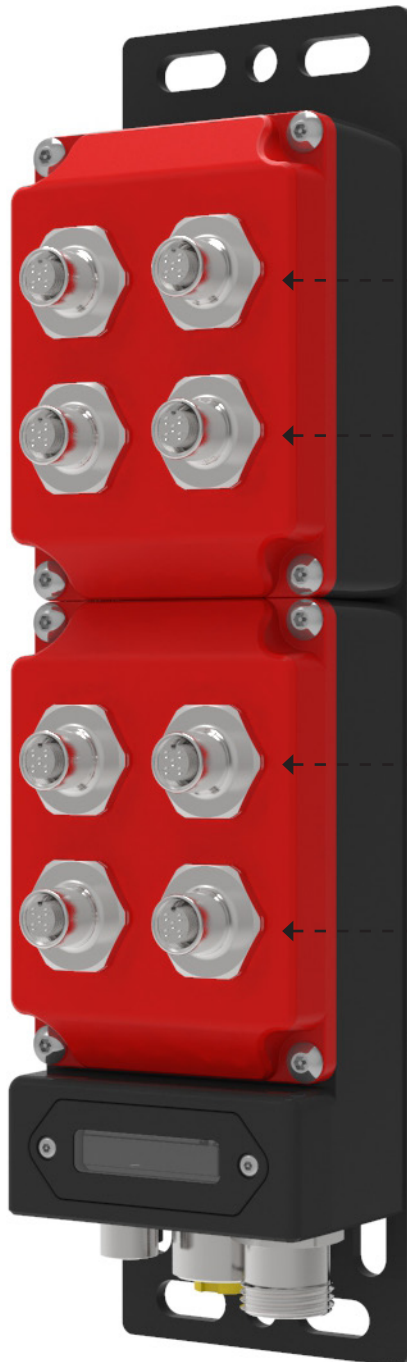
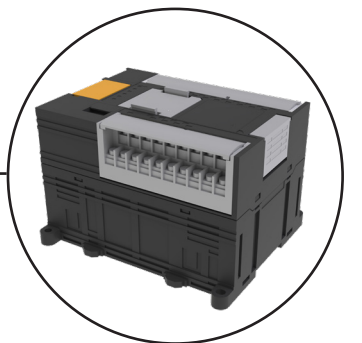
Safety Input: E-Stop with Controls



Safety Input: Solenoid Gate Interlock



Safety Output: VF Drive for a Motor



I/O Blocks: CONMPB1NH11QZQZQZQYB0000PF11T04830

Description: CONMPB1NH11QZQZQZQYB0000PF11T04830

A typical unit, shown here, is available with 4 or 5 pin 7/8" power connection, matching industry standards, with 6 safety rated inputs and 2 safety rated outputs.

QD1 - QZ (Dual-Channel Safety Input)

QD1 - DUAL SAFETY IN	
5 PIN, FEMALE, M12	
Pin	Function
1	INPUT 2 (OUT)
2	INPUT 2 (IN)
3	0V
4	INPUT 1 (IN)
5	INPUT 1 (OUT)

QD2 - QZ (Dual-Channel Safety Input)

QD2 - DUAL SAFETY IN	
5 PIN, FEMALE, M12	
Pin	Function
1	INPUT 2 (OUT)
2	INPUT 2 (IN)
3	0V
4	INPUT 1 (IN)
5	INPUT 1 (OUT)

QD3 - QZ (Dual-Channel Safety Input)

QD3 - DUAL SAFETY IN	
5 PIN, FEMALE, M12	
Pin	Function
1	INPUT 2 (OUT)
2	INPUT 2 (IN)
3	0V
4	INPUT 1 (IN)
5	INPUT 1 (OUT)

QD4 - QY (Dual-Channel Safety Output)

QD2 - DUAL SAFETY OUT	
5 PIN, FEMALE, M12	
Pin	Function
1	+24V
2	OUTPUT 2
3	0V
4	OUTPUT 1
5	-

QD5

QD5 - DATA OUT	
4 PIN, FEMALE, M12	
Pin	Function
1	2 (TX+)
2	1 (RX+)
3	2 (TX-)
4	1 (RX-)

QD6

QD6 - DUAL POWER IN	
5 PIN, MALE, 7/8	
Pin	Function
1	0V
2	0V
3	CASE/EARTH
4	+24V
5	+24V

QD7

QD7 - DATA IN	
4 PIN, FEMALE, M12	
Pin	Function
1	2 (TX+)
2	1 (RX+)
3	2 (TX-)
4	1 (RX-)

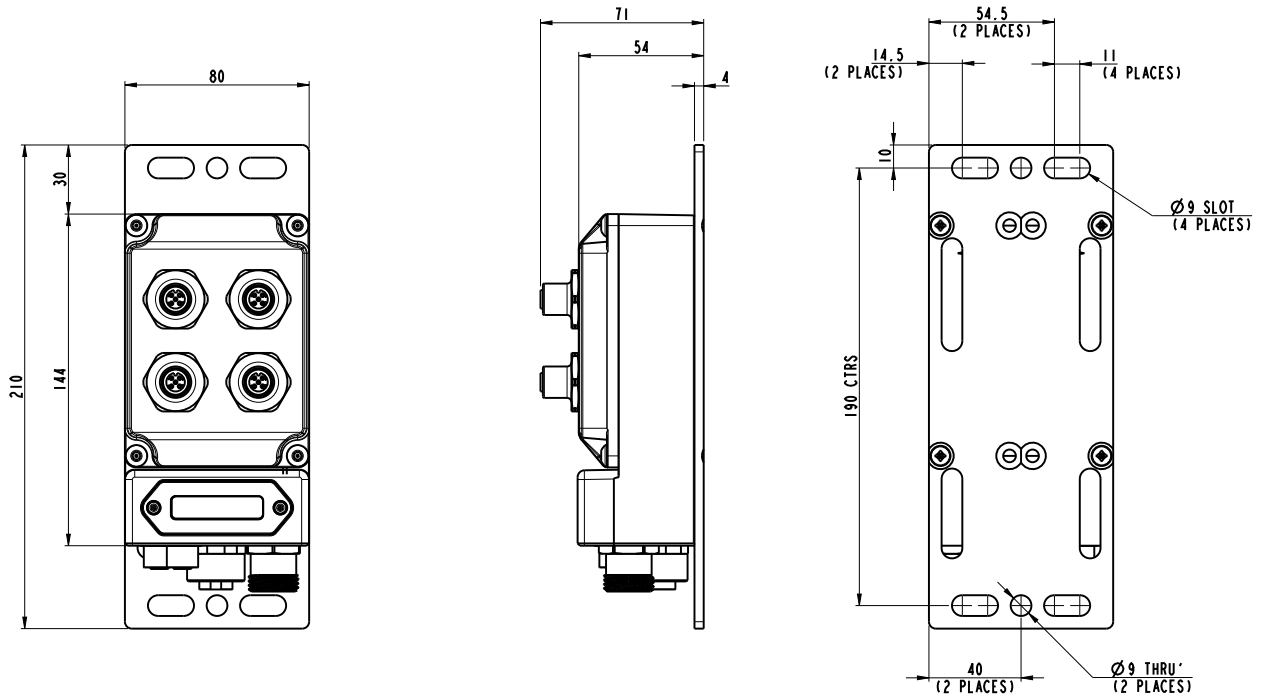
QD8

QD8 - DUAL POWER OUT	
5 PIN, FEMALE, 7/8	
Pin	Function
1	0V
2	0V
3	CASE/EARTH
4	+24V
5	+24V



*Please Note: alternative connection types available

Figure 1: Dimensional Drawing - CONMPB1NH11QZQZQZQYB0000PF11T04830



Description: CONMPB1NH21QZQZQZQYQXQXQXQXB0000PF11T04823

A typical unit, shown here, is available with 4 or 5 pin 7/8" power connection, matching industry standards, with a mix of safety rated and standard IO (6 safety rated inputs, 2 safety rated outputs, 4 standard inputs and 4 standard outputs).

QD5 - QX

(Non-Safe Mixed I/O)

QD5 - NON-SAFE MIXED I/O	
5 PIN, FEMALE, M12	
Pin	Function
1	+24V
2	OUTPUT
3	0V
4	INPUT
5	EARTH

QD7 - QX

(Non-Safe Mixed I/O)

QD7 - NON-SAFE MIXED I/O	
5 PIN, FEMALE, M12	
Pin	Function
1	+24V
2	OUTPUT
3	0V
4	INPUT
5	EARTH

QD1 - QZ

(Dual-Channel Safety Input)

QD1 - DUAL SAFETY IN	
5 PIN, FEMALE, M12	
Pin	Function
1	INPUT 2 (OUT)
2	INPUT 2 (IN)
3	0V
4	INPUT 1 (IN)
5	INPUT 1 (OUT)

QD3 - QZ

(Dual-Channel Safety Input)

QD3 - DUAL SAFETY IN	
5 PIN, FEMALE, M12	
Pin	Function
1	INPUT 2 (OUT)
2	INPUT 2 (IN)
3	0V
4	INPUT 1 (IN)
5	INPUT 1 (OUT)

QD6 - QX

(Non-Safe Mixed I/O)

QD6 - NON-SAFE MIXED I/O	
5 PIN, FEMALE, M12	
Pin	Function
1	+24V
2	OUTPUT
3	0V
4	INPUT
5	EARTH

QD8 - QX

(Non-Safe Mixed I/O)

QD8 - NON-SAFE MIXED I/O	
5 PIN, FEMALE, M12	
Pin	Function
1	+24V
2	OUTPUT
3	0V
4	INPUT
5	EARTH

QD2 - QZ

(Dual-Channel Safety Input)

QD2 - DUAL SAFETY IN	
5 PIN, FEMALE, M12	
Pin	Function
1	INPUT 2 (OUT)
2	INPUT 2 (IN)
3	0V
4	INPUT 1 (IN)
5	INPUT 1 (OUT)

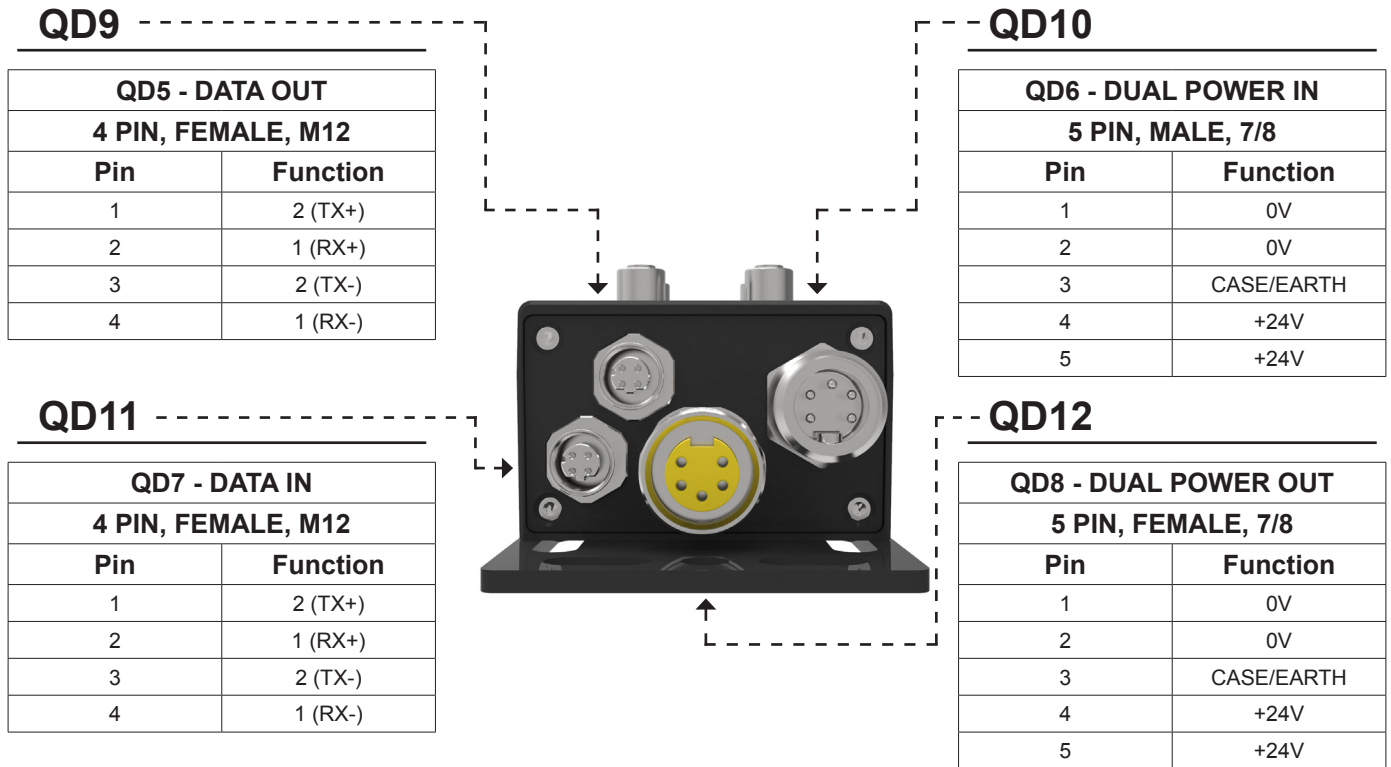
QD4 - QY

(Dual-Channel Safety Output)

QD4 - DUAL SAFETY OUT	
5 PIN, FEMALE, M12	
Pin	Function
1	+24V
2	OUTPUT 2
3	0V
4	OUTPUT 1
5	-

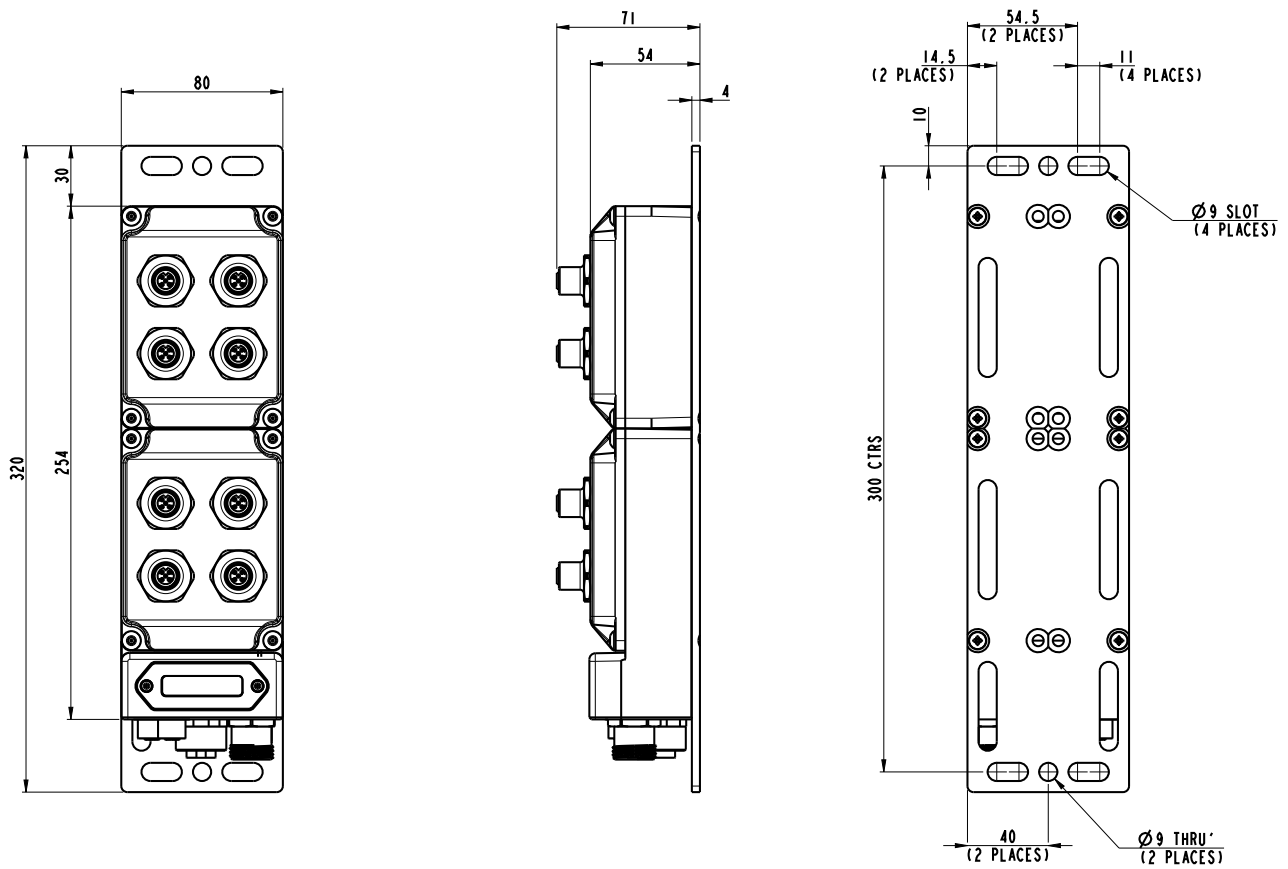


PF11



*Please Note: alternative connection types available

Figure 1: Dimensional Drawing - CONMPB1NH21QZQZQZQYQXQXQXQXB0000PF11T04823



Description: CONMPB1JH21QXQXQXQXQXQXQXQXQXQB0000PF11T04833

A typical unit, shown here, is available with 4 or 5 pin 7/8" power connection, matching industry standards, with 8 standard inputs and 8 standard outputs.

QD5 - QX

(Non-Safe Mixed I/O)

QD5 - NON-SAFE MIXED I/O	
5 PIN, FEMALE, M12	
Pin	Function
1	+24V
2	OUTPUT
3	0V
4	INPUT
5	EARTH

Max Output Current 0.5A
Over current, over voltage & reverse bias protection

QD7 - QX

(Non-Safe Mixed I/O)

QD7 - NON-SAFE MIXED I/O	
5 PIN, FEMALE, M12	
Pin	Function
1	+24V
2	OUTPUT
3	0V
4	INPUT
5	EARTH

Max Output Current 0.5A
Over current, over voltage & reverse bias protection

QD1 - QX

(Non-Safe Mixed I/O)

QD1 - NON-SAFE MIXED I/O	
5 PIN, FEMALE, M12	
Pin	Function
1	+24V
2	OUTPUT
3	0V
4	INPUT
5	EARTH

Max Output Current 0.5A
Over current, over voltage & reverse bias protection

QD3 - QX

(Non-Safe Mixed I/O)

QD3 - NON-SAFE MIXED I/O	
5 PIN, FEMALE, M12	
Pin	Function
1	+24V
2	OUTPUT
3	0V
4	INPUT
5	EARTH

Max Output Current 0.5A for each output
Over current, over voltage & reverse bias protection

QD6 - QX

(Non-Safe Mixed I/O)

QD6 - NON-SAFE MIXED I/O	
5 PIN, FEMALE, M12	
Pin	Function
1	+24V
2	OUTPUT
3	0V
4	INPUT
5	EARTH

Max Output Current 0.5A
Over current, over voltage & reverse bias protection

QD8 - QX

(Non-Safe Mixed I/O)

QD8 - NON-SAFE MIXED I/O	
5 PIN, FEMALE, M12	
Pin	Function
1	+24V
2	OUTPUT
3	0V
4	INPUT
5	EARTH

Max Output Current 0.5A
Over current, over voltage & reverse bias protection

QD2 - QX

(Non-Safe Mixed I/O)

QD2 - NON-SAFE MIXED I/O	
5 PIN, FEMALE, M12	
Pin	Function
1	+24V
2	OUTPUT
3	0V
4	INPUT
5	EARTH

Max Output Current 0.5A
Over current, over voltage & reverse bias protection

QD4 - QX

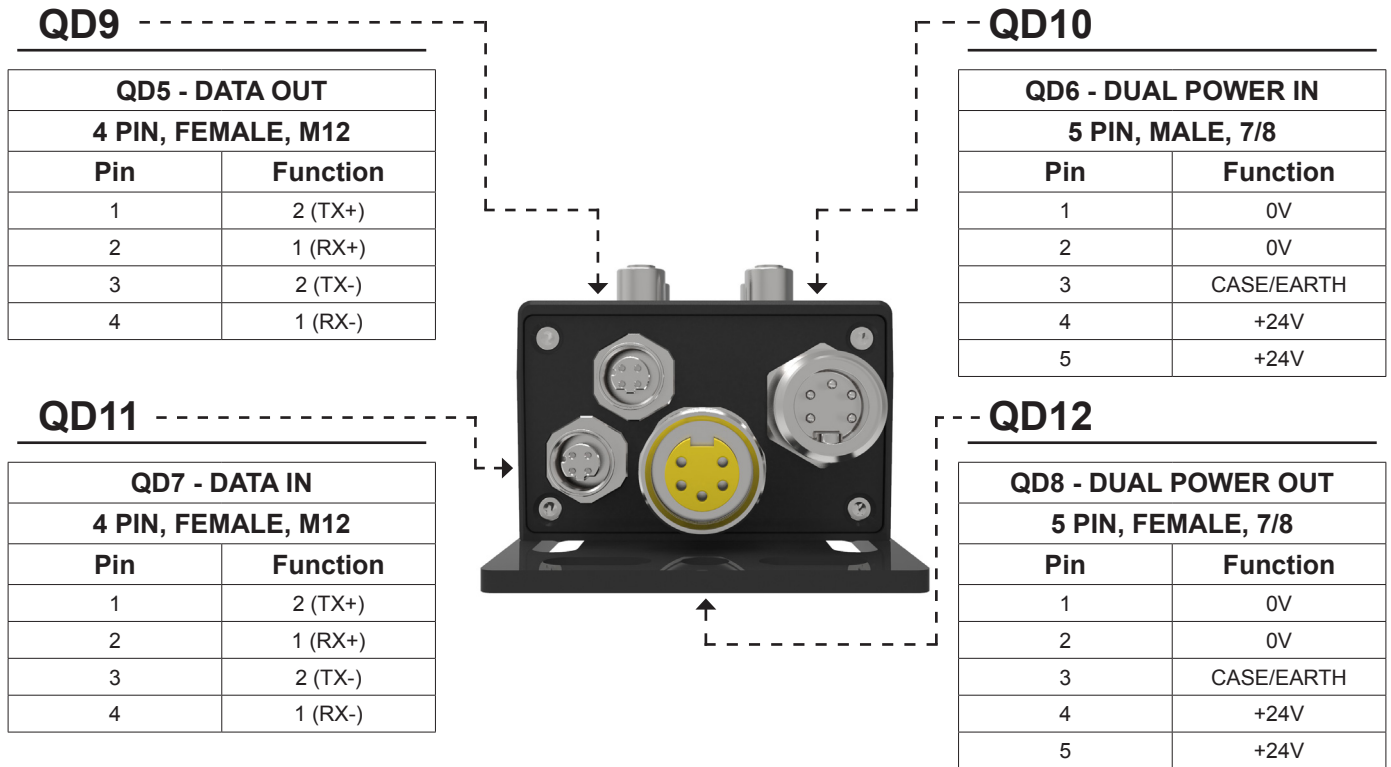
(Non-Safe Mixed I/O)

QD4 - NON-SAFE MIXED I/O	
5 PIN, FEMALE, M12	
Pin	Function
1	+24V
2	OUTPUT
3	0V
4	INPUT
5	EARTH

Max Output Current 0.5A for each output
Over current, over voltage & reverse bias protection



PF11



*Please Note: alternative connection types available

Figure 1: Dimensional Drawing - CONMPB1JH21QXQXQXQXQXQXQXQXB0000PF11T04833

